

# Frieda River Project Overview

Empowering Communities through Capacity Building  
Martina Aki: Case Study

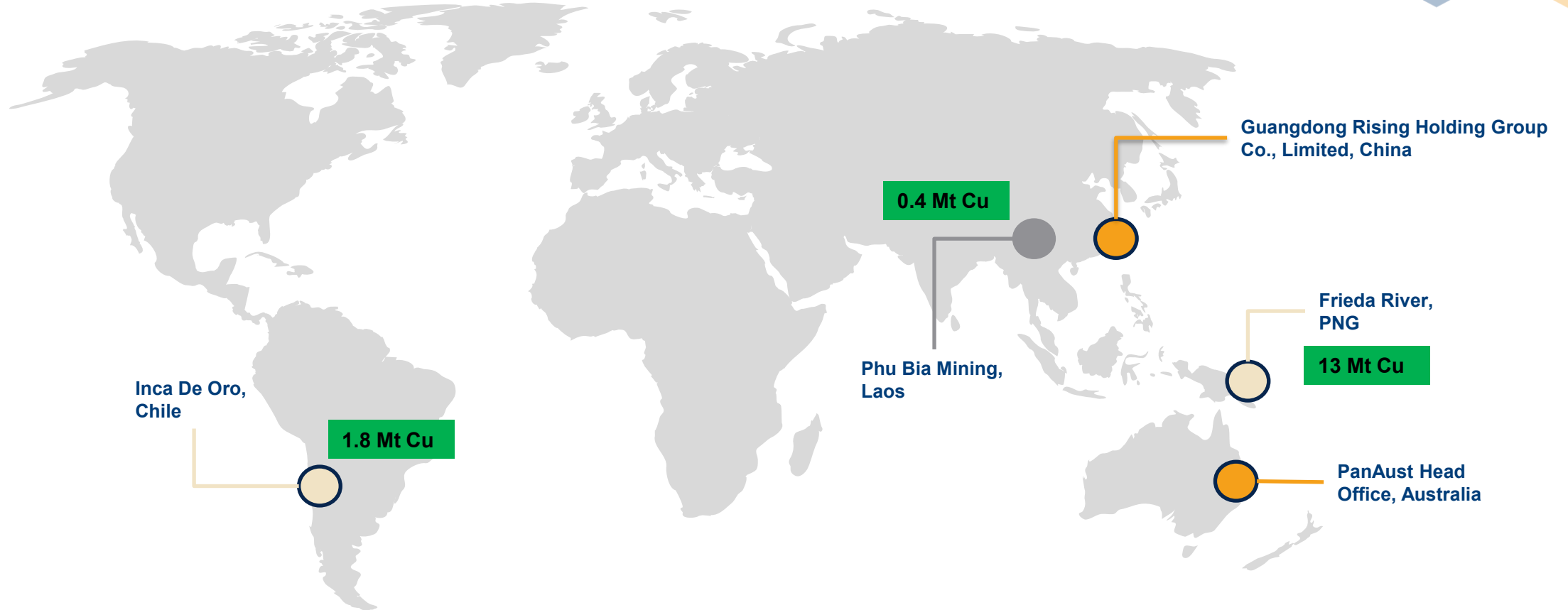
**Phil McCormack**  
Project Director Frieda River Limited





# Introduction to the PanAust Group

**We are an Australian Headquarter Mining company, 100% owned GDRH subsidiary, with international expertise**



# We have a track record of sustainably developing and operating mines

## Phu Kham Copper-Gold Operation

**2005** Production Commenced

**1,190kt** Original copper resource

**Status** In operation (open cut)

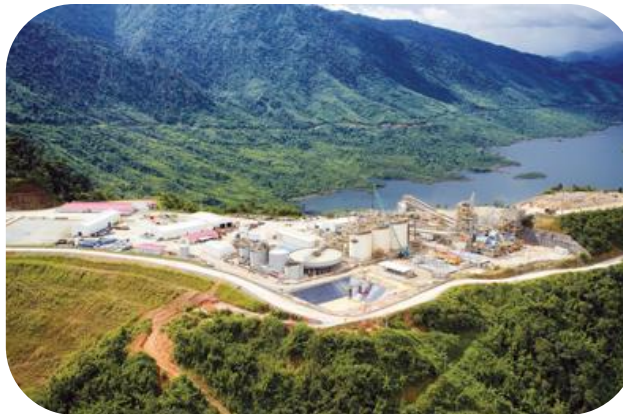


## Ban Houayxai Gold-Silver Operation

**2012** Production Commenced

**1,600koz** Original gold resource

**Status** In operation (open cut)



**PanAust is a high-performing mining company, with a demonstrated history of robust production and operational experience**



**FRIEDA RIVER**

# Frieda River Limited & Sepik Development Project

- The Frieda River orebody amongst the top 10 undeveloped in the world.
- Orebody located in Sundaun Province.
- Sepik Development Project
  - FRL's model for sustainable development.
  - 4-pillar, multi-billion-kina investment.



# Sepik Development Project – Key Areas

## Frieda River Copper-Gold Project

### Creating:

- ✓ Jobs
- ✓ Revenue
- ✓ Business opportunities

## Sepik Infrastructure Project

### Enabling:

- ✓ Connectivity
- ✓ Domestic and international trade
- ✓ Social and community development



## Frieda River Hydroelectric Project

### Providing energy that is:

- ✓ 600MW Renewable Capacity
- ✓ Stable
- ✓ Clean

## Sepik Power Grid Project

### Delivering green power to:

- ✓ Industry
- ✓ Commerce
- ✓ Communities



FRIEDA RIVER

# Project Direct Economic Benefits

**K\$29.2Bn**

**US\$9.3Bn**

**Direct capital investment  
in real term**

**5000+<sup>(1)</sup>**

**(90% PNG nationals)**

**Direct Full Employment**  
(excluding contractors etc)

**K\$24.4Bn**

**US\$7.61Bn**

**Direct cashflows to GoPNG  
and landowner**  
(tax, royalty and levy)

**K\$4.8Bn**

**US\$1.5Bn**

**Production value  
per year**

**K\$2.2Bn**

**US\$700Mn**

**Ongoing expenditure per  
year**  
(for FRCGP & FRHEP)

**K\$17.2Bn<sup>(1)</sup>**

**US\$5.36Bn**

**Potential returns to GoPNG  
Equity**  
participation (30% share)

- Note 1: This only includes employment for FRCGP and FRHEP
- Source: ACIL ALLEN CONSULTING 2018 Economic Impact Assessment Report



**FRIEDA RIVER**

# Project Indirect Economic Benefits

The Project will stimulate local economies and drive growth across key indicators

**K90.3Bn**

**US\$28.8Bn**

Increase in the real GDP driven  
by the Project

**K79.3Bn**

**US\$25.3Bn**

Increase in the real income of  
PNG residents by the Project

**0.3%**

Appreciation of PNG real  
exchange rate by the Project



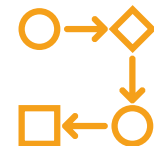
**Investment in social assets**  
(improved education and health  
services) by Project stakeholders



**New business activities**  
facilitated by Sepik Infrastructure  
Project



**Opportunities for local  
business**  
(outsourcing of services)



**Flow on impacts**  
to other provinces and regions  
across PNG

An increase in regional **real GDP** totalling of **K81.3 billion (US\$25.9 billion)**

An increase in regional **real incomes** totalling **K40.9 billion (13.0 billion)**

Source: ACIL ALLEN CONSULTING 2018 Economic Impact Assessment Report



**FRIEDA RIVER**



# Jobs for the people of PNG

**FRL is targeting over 90% localisation**

## FRCGP – Peak employment of 2,280 staff

Life of Mine (LOM)	Total	Construction	Operational Readiness	Operations
Year -7 to -6	700	700	-	-
Year -5 to -2	2,750	2,750	-	-
Year -1	1,170	850	320	
Years 1 to 8	2,280	360	-	1,920
Years 9 to 33	2,080	-	-	2,080

## FRHEP - Peak employment of 2,270 staff

Life of Mine (LOM)	Total	Construction	Operational Readiness	Operations
Year -8 to -6	1,750	1,750	-	-
Year -5 to -2	2,270	2,260	10	-
Year -1	1,210	1,120	90	
Years 1 to 33	130	-	-	130



- Direct Frieda River employment, excludes contractors and short term employees.



# Our Commitment to our Host Communities and Papua New Guinea

**We will continue to align with the PNG strategic plan**

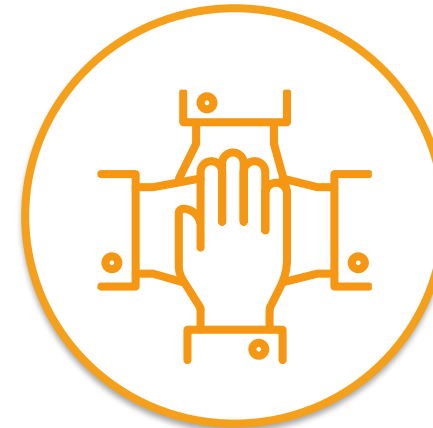
The proposed development of the Sepik Development Project will continue to support key elements of the PNG strategic plan through:



**Establishing necessary  
public infrastructure**



**Generating skilled  
employment**



**Creating business  
opportunities for local  
communities**



**FRIEDA RIVER**

# Our Host Communities at Frieda River

**Enduring relationship with the communities underpins our success**

- Three tribal groups
- Seven landowner near mine and FRHEP villages
- Hosted by the districts of Telefomin and Ambunti





# Frieda River communities

- Frieda River Project has 7 preferred area communities – Amaromin, Ok Isai, Paupe, Sokamin, Wabia, Wameimin 1, & Wameimin 2.
- The 7 villages are in 3 language groups:
  - Miyan language group.
  - Telefol Language group
  - Paiyamo language group
- Martina is from Wabia village.
- Population of the 7 villages as Jan 2025: 2315.



# Capacity-building training

Provided by FRL

- Adult literacy
- Financial literacy
- Marketing skills
- Leadership training
- Village Birth Attendance
- Sewing and other life skills





# Our Social Investment Programs

## Addressing the poverty of access

- Health access (maternal and child health)
- Focus on primary school education
- Tertiary education support program
- Targeted capacity training for women and girls





## Who is Martina Aki?

- ✓ Subsistence farmer
- ✓ Devoted wife
- ✓ Responsible mother
- ✓ Committed citizen
- ✓ Village Leader



**FRIEDA RIVER**



# Martina's journey

- ✓ She ensured her children were given the best opportunity to complete their education
- ✓ She stood up for the rights of women and youth
- ✓ She embraced the capacity-building training
- ✓ Sees training as power to self determination
- ✓ She is keen to see sustainable development



# Preparing for social impacts

- ✓ Engaged in literacy, leadership, financial training
- ✓ Learned practical skills: sewing, baking, marketing
- ✓ Gained confidence and self-belief
- ✓ Realised her potential to inspire others
- ✓ Gained confidence and self-belief.
- ✓ Inspires other women to be independent and strong.
- ✓ Teachers the women to be hope for the best but plan for the worst social impacts of the mine on families.







# From Learner to Trainer

- ✓ Completed Train-the Trainer program.
- ✓ Began mentoring women, youth, and emerging leaders.
- ✓ Became a role model in her community.



FRIEDA RIVER

# Leadership in Action

- ✓ Wabia women's representative at the Community Leadership Forum
- ✓ Participates in quarterly decision-making forums
- ✓ Advocates for inclusive and sustainable development
- ✓ Supports the Sepik Development Project







**Not male leaders or female leaders, just leaders.**







# Em Tasol



FRIEDA RIVER