



**RAMU
NICO**

Ramu NiCo Project Benefit Sharing Presentation

**Eric Kuman | General Manager CA
Madang | 28th July 2025**

Ramu NiCo Management (MCC) Limited.

Presentation Outline



1. Introduction
2. Ramu NiCo Locality
3. Community Investment Activities
4. Health & Education Investments
5. Agriculture Development Project
6. Gender Development Project
7. Lands Use Compensation
8. Royalty Payments
9. Procurements & Spin-off Business
10. Future Generation Trust Fund
11. Ramu NiCo Tax Remittance
12. General Donations & Community Assistance
13. Employment & Training



- ✓ Ramu Nickel Project, managed by Ramu NiCo Management (MCC) Limited, a subsidiary of the China Metallurgical Corporation (MCC). With an investment of \$2.041 billion USD in its foundation, Ramu NiCo has redefined mining dynamics in the southern hemisphere. This project uses high level technology to mine and produces 33,000 tons of nickel hydroxide and 3,300 tons of cobalt minerals annually, extracted from over 78 million tons of proven nickel and cobalt reserves. It built its reputation as an industry leader, making Ramu NiCo the first mining project globally to implement all-wet smelting technology for processing nickel laterite ore.
- ✓ Apart from its operational excellence, Ramu NiCo strengths lies in its contribution to local communities and Papua New Guinea economy. It creates job opportunities for over 1,500 jobs for our nationals. Under the auspicious of MOA, the company has enrichment programs in health, education, gender development, sustainable economic development, business development and infrastructure. Furthermore, landowners are compensated through royalties and Land use/loss.

Ramu NiCo Locality & Footprint



Madang spans a land area of 28,886 square km, with a population of 493,906 since 2011 Census.

The SML 8 covers an area of 54 square Km. It is located 80 Km South-West of the Provincial capital of Madang.

Exploration License (EL) 2579 surrounds the SML 8 which holds the laterite nickel ore of the Kurumbukari (KBK) Mine site covers an area of 249 square km.

Pipeline runs 136 kilometers from Mine at Kurumbukari to Refinery at Basamuk.

4 Landowner Associations (KBK, Basamuk, Inland Pipeline & Coastal Pipeline)

4 Women Associations ((KBK, Basamuk, Inland Pipeline & Coastal Pipeline)

- Royalties are paid & shared with LLGs, Churches & Women and Girls in the province

Ramu NiCo Community Investment Activities



Education: Fee Assistance & Infrastructure projects

Health: Medical Supplies & Infrastructure projects

Social Economic Development programs

Community Development Funds (CDF):

- ✓ Ramu NiCo is exempted from Corporate Income tax until 2026. Effectively Tax Credit Scheme does not come in play for all SEDP projects.
- ✓ ***K1.2 M*** annually, distributed equally to the 4 Project Footprint Areas

Health & Education Developments (2020-2024)



Infrastructure & Assistance Updates:

Health

- K2.9 Million Infrastructure projects
- K257,000 Medical Supplies to 4 Health Centers
- Covers 17,000+ population



New Level 2 Hospital built & handover in Raicoast District

Education

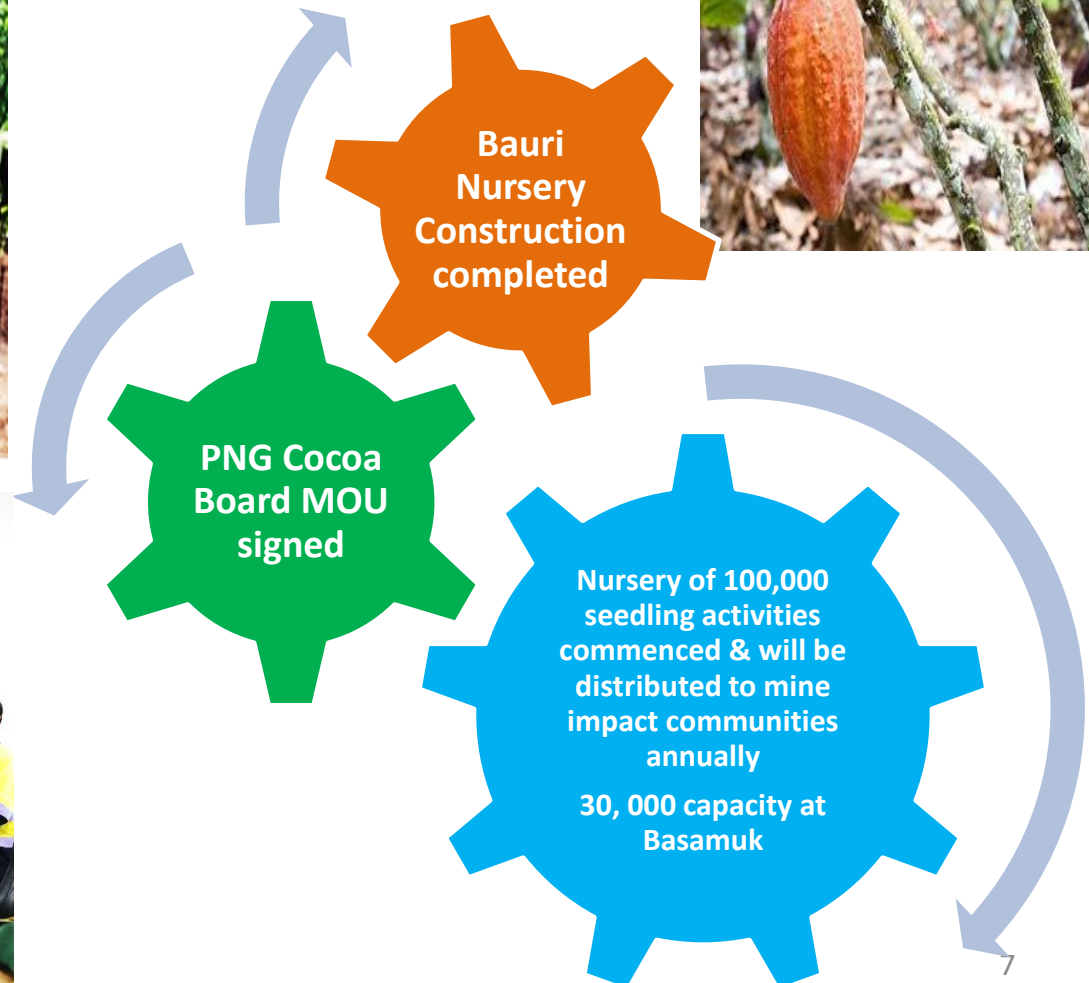
- K2.9M in infrastructure projects
- K2.31M for Education Assistance
- 573 students benefited



Agriculture Development Project



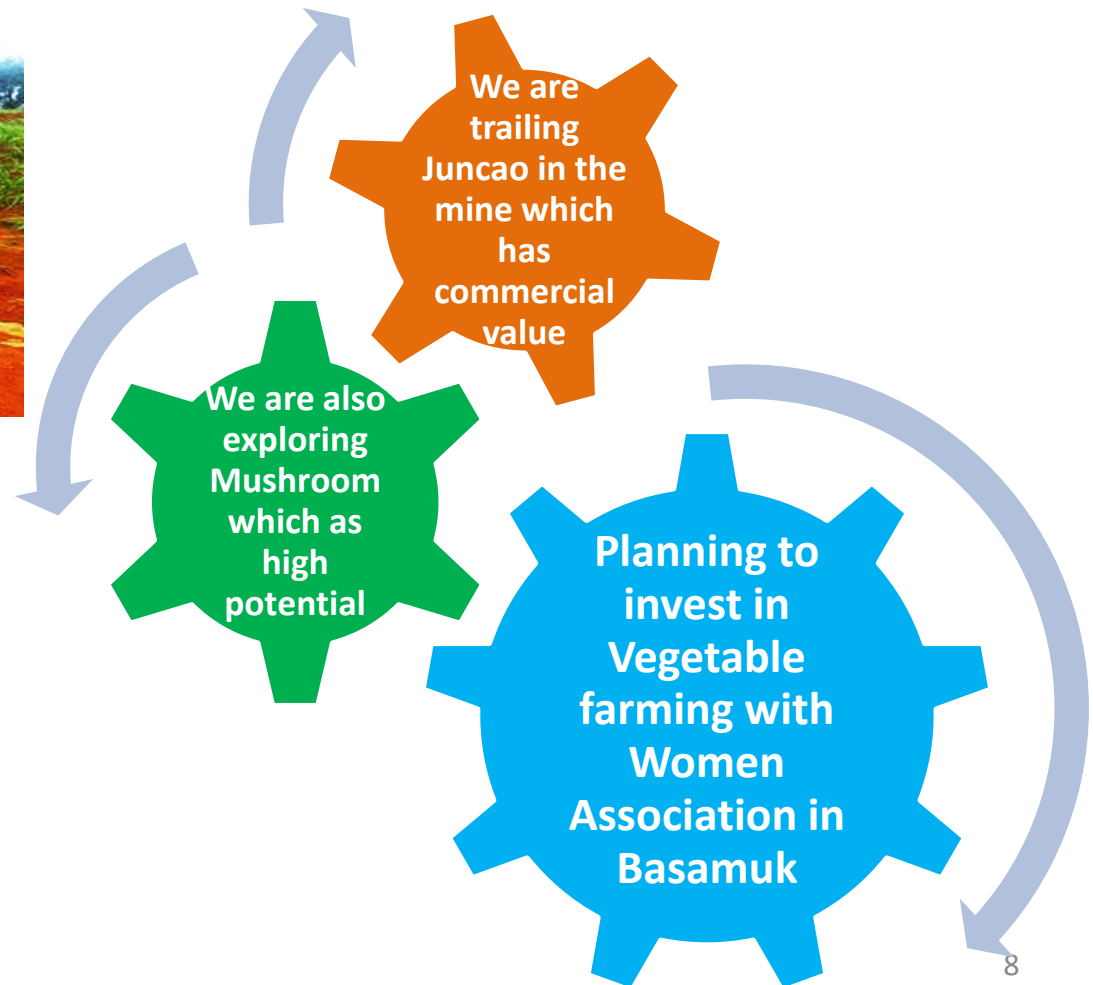
Agriculture Cocoa Development Updates:



Agriculture Development Project



Other Agriculture Development Updates:



Gender Development Project



Gender Development Updates:

Community Learning Centre

- 1st CLC with CPL WA
- We are planning to build 3 more in each region

Life Skills Training

- Sewing training
- Baking training
- Hospitality
- others

Women in SME

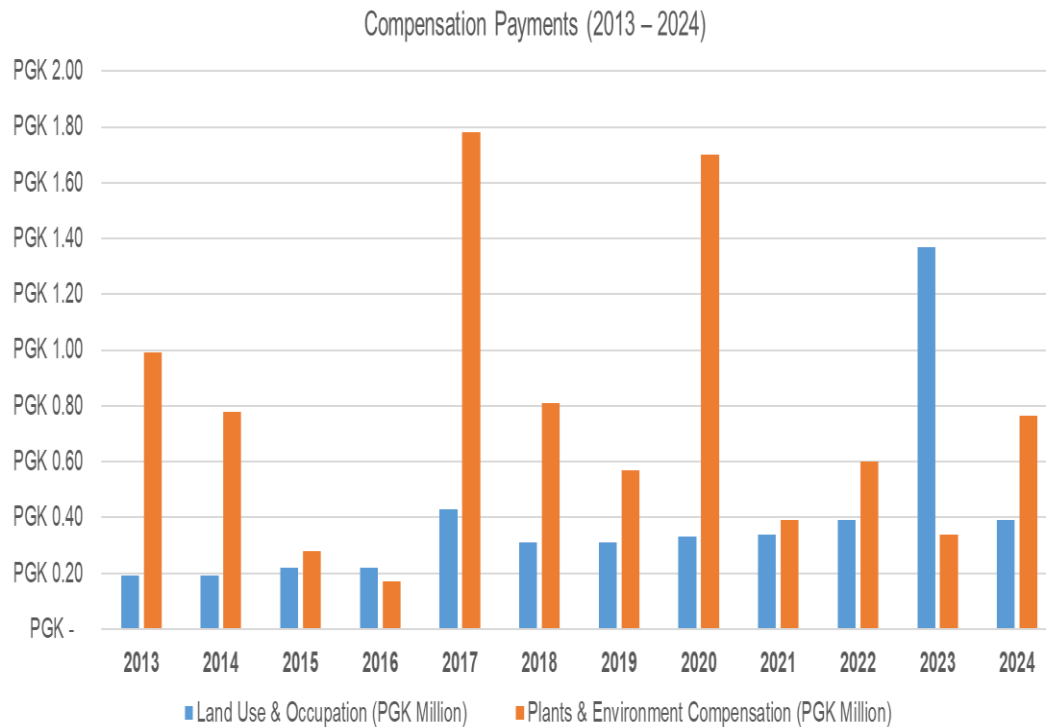
- SME training
- Vegetables Farming in Basamuk
- Women in Business-KBK Women
- MRA K500,000 loan facility



Land Use Compensation Payments (2013-2024)



Compensation Updates:



A total of K12.73M

Royalty Payments (2013-2024)



Royalty payment updates:

Year	Total Amount	
2013 - 2017 (Jan - Jun)	PGK	25,537,210.13
Jul - Dec 2017	PGK	8,333,511.06
2018	PGK	16,374,587.05
2019	PGK	26,233,042.40
2020	PGK	17,322,169.51
2021	PGK	33,405,014.78
2022	PGK	33,294,276.72
2023	PGK	27,541,618.94
2024	PGK	19,746,913.72
Total	PGK	207,788,344.31

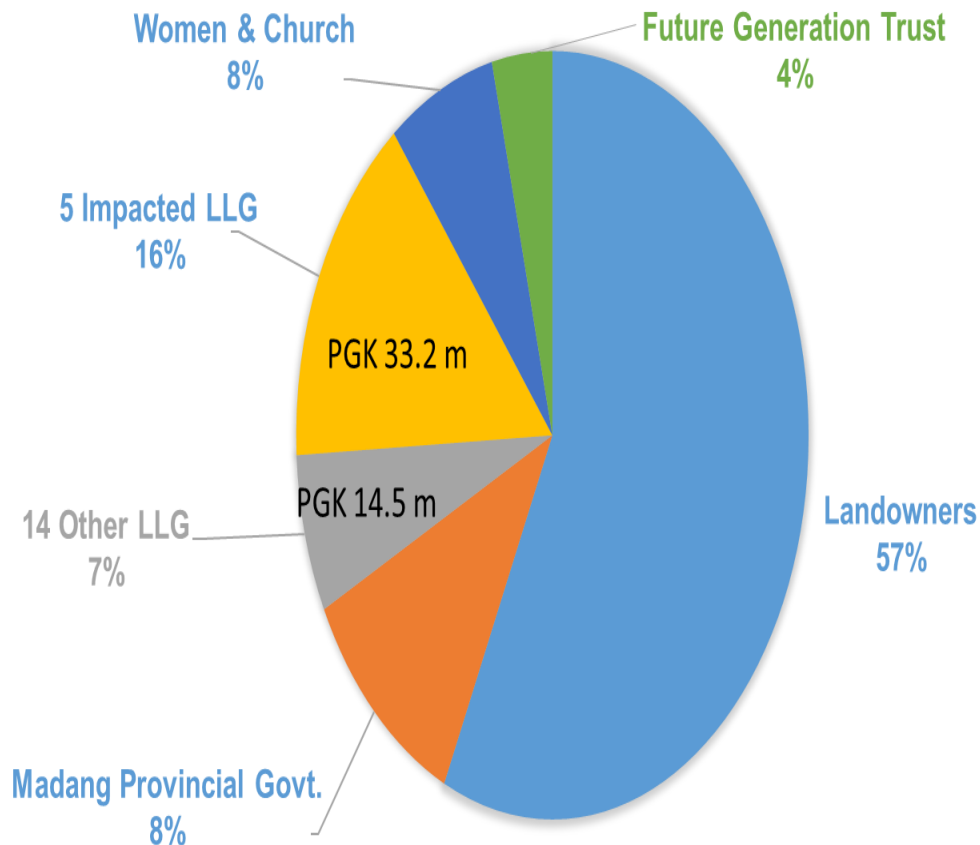


- ✓ A total of **K208M of royalties** paid to date.
- ✓ Recipients are MPG, LLGs, Landowners, Churches, Women Associations & LOAs

Royalty Payments (2013-2024)



Royalty distribution per MOA/CDA updates:



Landowners
57% K119M

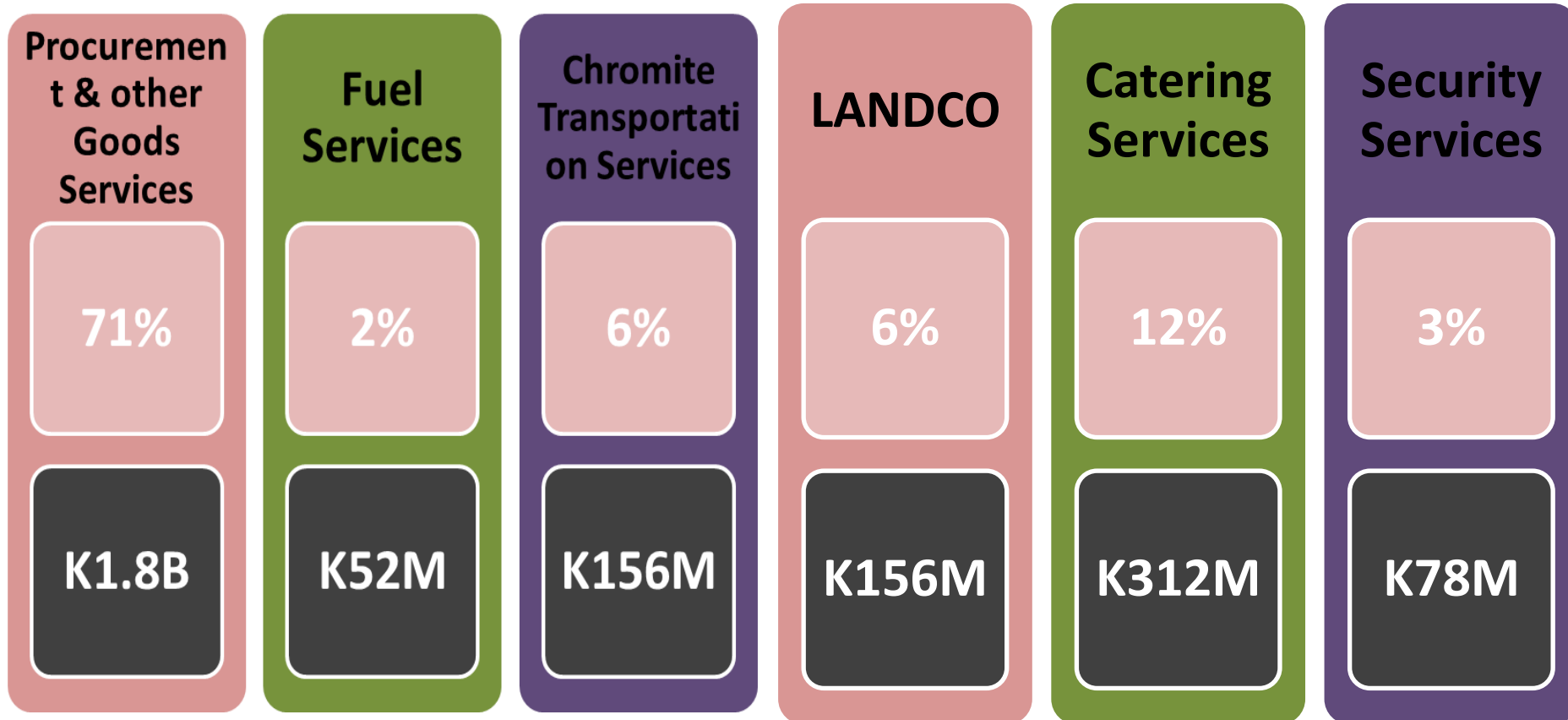
19 LLGs
26% K48M

Madang Provincial
Government
8% K17M

Procurements & Spin-off Business (2013-2024)



Business Spin-offs & Procurement updates:



A total of K2.6 billion.

Procurements & Spin-off Business (2013-2024)



Business Spin-offs & Procurement Participation updates:

Project Areas	2022	2023	2024
Total In-country Spend (PGK)	133M	162M	236M
% of In-country Spend	11%	19%	28%
Total Number of Landowner companies engaged	38	39	40
Total number of PNG companies engaged	143	148	164

Note: Ramu NiCo paid dividends to MRDC as Joint Venture Partner since 2018

Future Generation Trust Fund (2000-2023)



Future Generation Funds as per MOA updates:

Payments	Payments Date	Amount (K)	Comments
Social Inconvenience (Land Comp.)	2000-2005	PGK 490,215	HPL
Social Inconvenience (Land Comp.)	2006-2018	PGK 1,274,315	OLD Rate
Social Inconvenience (Land Comp.)	2019-2024	PGK 1,062,519	Review Rate
FGTF 4% of Royalty Component	2013-2024	PGK 5,873,748	Royalty
Total		PGK 8,700,798	

Total Tax PGK 612M

Tax Breakup:

- ✓ Income Tax **PGK469M**
- ✓ GST **PGK 76M**
- ✓ Production Levy Tax **PGK39M**
- ✓ Transportation/Contract/Plant Hire & Security Services (FCWT) Tax **PGK18M**
- ✓ Construction Road Maintenance (BPT) Tax **PGK4M**
- ✓ Royalty Withholding Tax **PGK6M**



General Donations & Community Assistance (2013-2025)



Donation Updates:

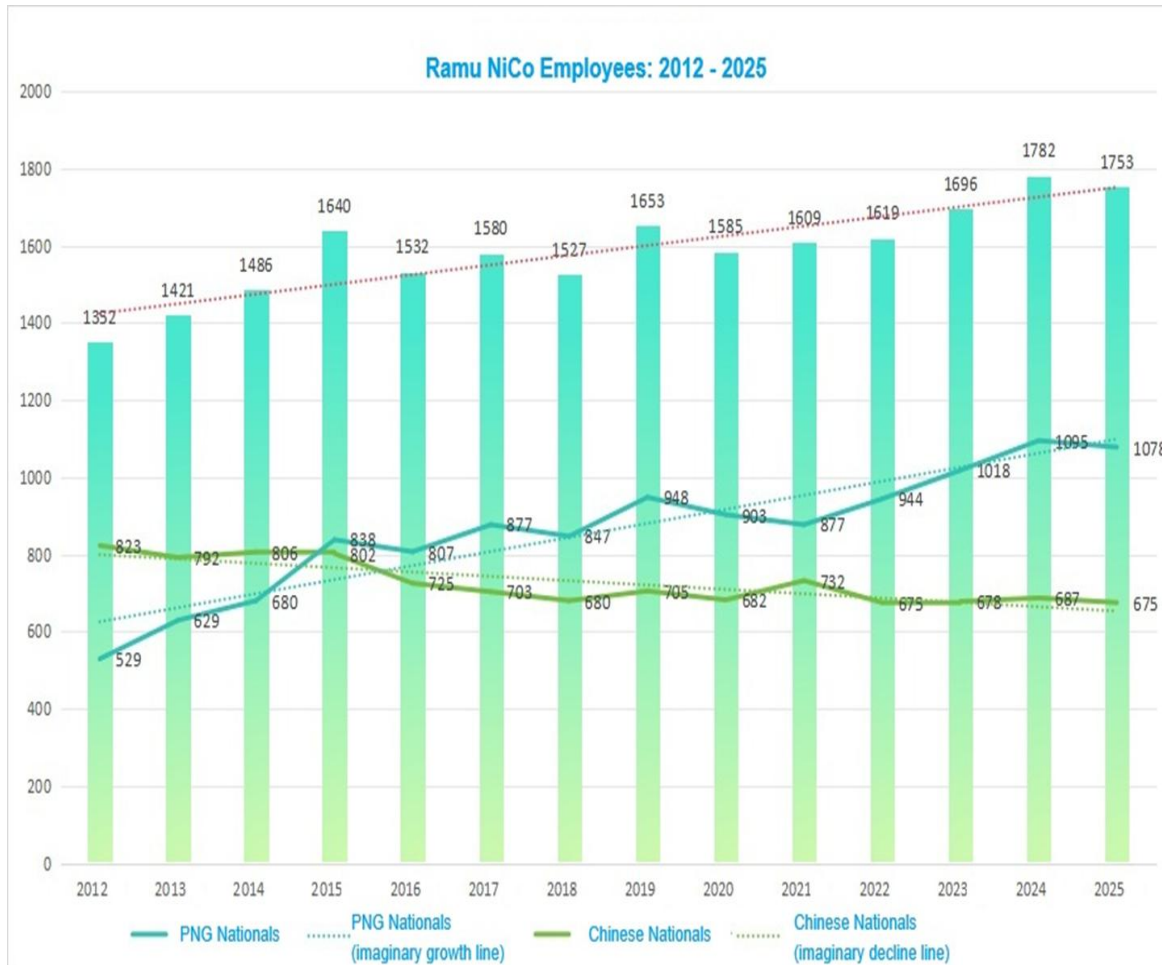
- ✓ Presentation of K10, 000 cash to Kangal Festival
- ✓ Donation of K100,000 to renovate Madang Police Traffic Office.
- ✓ Donation of K100,000 to MPHA for renovation of TB Ward at Modulon Hospital.
- ✓ Donation of K50,000 for MPG 50th Independence Anniversary celebration.
- ✓ A total of **K3.65M** committed so far in donations & community assistance



Employment & Training



Manning Levels by Nationality:



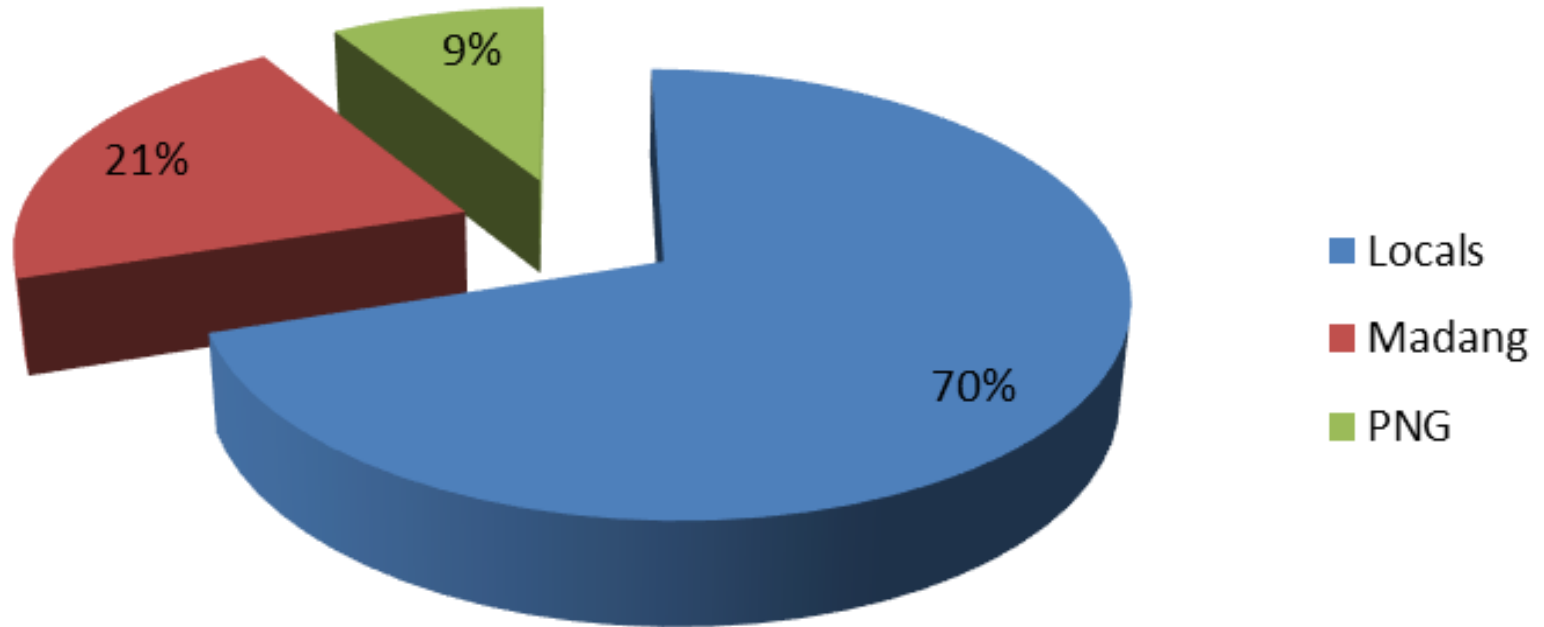
Nationals

• 1078

Chinese

• 675

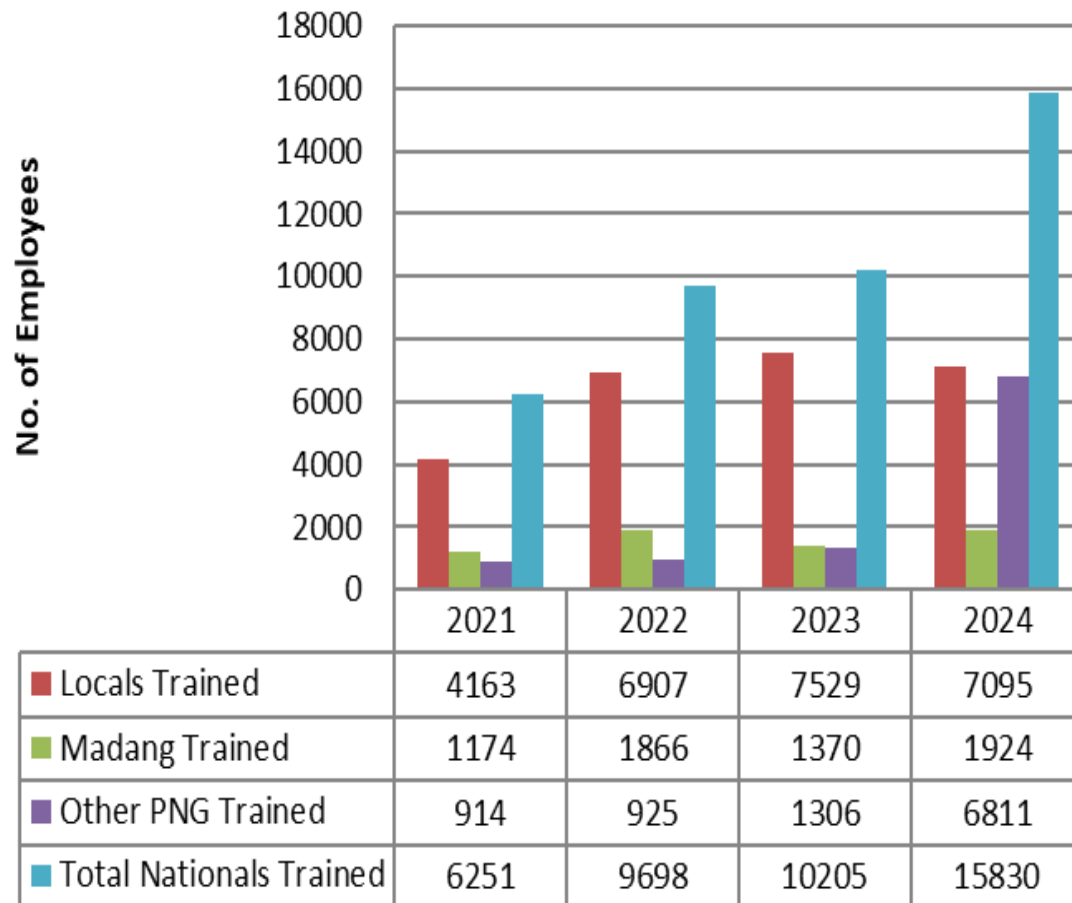
Ramu NiCo PNG Workforce Composition



Employment & Training



National Employees Training



Employment & Training

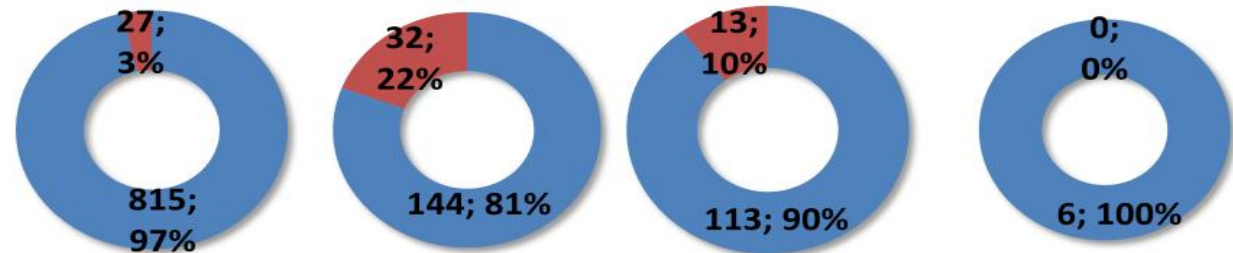


Work Force – By Gender



Skill & Operational Technical & Professional Front-Line Management Senior Management
 ■ Male ■ Female ■ Male ■ Female ■ Male ■ Female ■ Male ■ Female

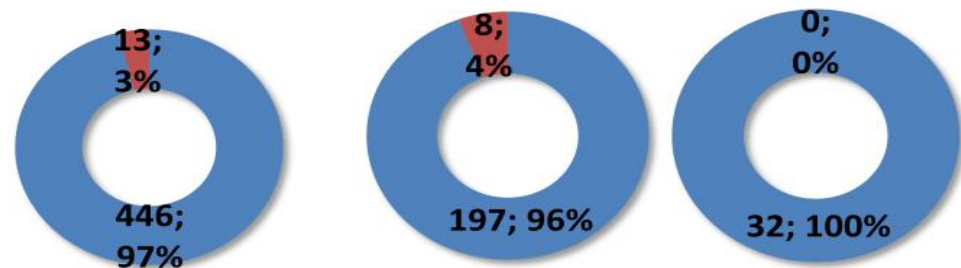
National



Skill & Operational Technical & Professional Front-Line Management Senior Management
 ■ Male ■ Female ■ Male ■ Female ■ Male ■ Female ■ Male ■ Female

Expatriate

0%



Ramu NiCo HR New Initiatives:

New sponsorship program 8 recipients K10,000 annually

Industrial Training intake of 30 students in 2025

University Collaboration MOU signed with UNITECH & UPNG July 2025

New GDS-20 graduates from various universities in 2025



The End.....



Questions?

