



# **PNG MINING AND PETROLEUM HOSPITALITY SERVICES LTD**



**SPA**

# Empowering Papua New Guineans: A Landowner Company's Commitment to National Growth

LEONIE TAMANING BAPTISTE

JULY 28, 2025



SPA

# DOMESTIC PROCUREMENT OF GOODS AND SERVICES

Many supplies are still imported — a missed opportunity. PNG Mining And Petroleum Hospitality Services Ltd advocates for greater local sourcing:

- Local procurement from PNG producers who meet standards.
- Strengthening the local economy and creating jobs.

**PGK 2,335,610.08**

Local Vegetable Purchases alone  
PNGMPHSL Santos  
*(since January 2025)*

**PGK 864,143.00**

Local Vegetable Purchases for  
Kainantu Support Services Ltd  
*(since December 2024)*



# SUPPLIER AND ENTREPRENEUR DEVELOPMENT

Papua New Guinea's manufacturing sector remains underdeveloped. PNG Mining and Petroleum Hospitality Services Ltd is committed to actively supporting its sustainable growth and long-term development.

**LOCAL SMES TO BECOME SUPPLIERS.**

**KEY STRATEGY 14: ENCOURAGING JOINT VENTURES BETWEEN LANDOWNER COMPANIES AND INTERNATIONAL FIRMS**

**BENEFITS INCLUDE TECHNOLOGY TRANSFER, MENTORSHIP,  
AND ECONOMIC RESILIENCE**



# SUPPLIER AND ENTREPRENEUR DEVELOPMENT

## TRANSPARENCY & NATIONAL CONTENT: THE WAY FORWARD

- Full disclosure of all spin-off benefits to landowner groups is essential.
- The National Content Policy must serve as the guiding framework to enforce this transparency.
- To truly 'Take Back PNG', we must: Ensure transparency in benefit sharing.
- Promote meaningful capacity building within the country.
- Strengthen landowner and national participation in development.

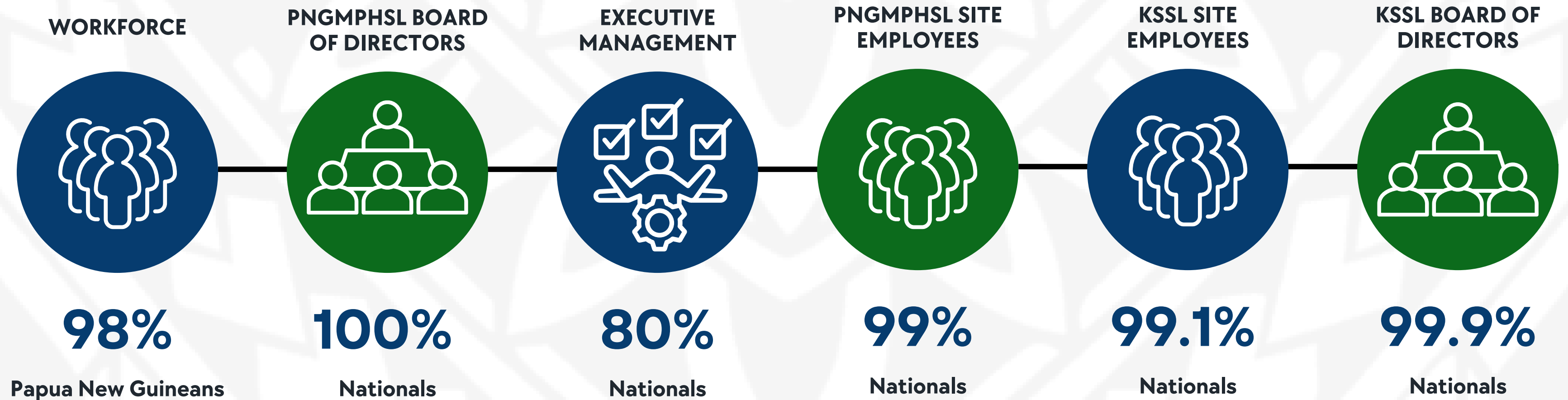
**TRANSPARENCY + CAPACITY = SUSTAINABLE OWNERSHIP**





# EMPLOYMENT OPPORTUNITIES FOR PAPUA NEW GUINEANS

Empowering Local Workforce Through Strong Employment Outcomes



# SKILLED WORKFORCE DEVELOPMENT

SKILLS ARE KEY TO SUSTAINABLE PARTICIPATION  
INITIATIVES



Graduate Internship Program



Continuous staff upskilling  
through training

*“We train for the future of Papua New Guineans — not for short-term employment.”*

# GREATER EQUITY PARTICIPATION BY PAPUA NEW GUINEANS

PNG Mining and Petroleum Hospitality Services Ltd is:

100% Papua New Guinean Owned

Landowners are shareholders and decision-makers

A shift from spectators to stakeholders





# OVERSIGHT & SUPPORT FOR SUSTAINABLE DEVELOPMENT

Our Ongoing Corporate Social Responsibility:

Supported Church Construction

Donations to Angau Memorial Hospital

Sponsorships

Continued internships

True development must go beyond profit — it must touch lives.

# TRAINING IN NECESSARY CHANGES

## ADAPTING TO INDUSTRY CHANGES AND NEW STANDARDS

TRAINING INCLUDES:

Health & Safety Compliance

Adult Literacy & Numeracy

Food Safety & Hygiene Client-required Operational Standards

*Aim: help staff keep and thrive in their roles.*

*Workforce is our greatest asset*













# CECILIA TARU

**VILLAGE:** INU, LAKE KUTUBU

**POSITION:** ROOM ATTENDANT

*“I HOPE TO LEAVE A LEGACY AS ONE OF  
THE COMPANY’S OUTSTANDING  
EMPLOYEES — SOMEONE THAT OTHERS  
WHO COME AFTER ME CAN LOOK UP TO  
AND FOLLOW IN MY FOOTSTEPS.”*











In Papua New Guinea, a smile is more than a gesture — it's a bridge between cultures, a sign of respect, and the first step in building lasting connections with our local communities.







# THANK YOU!

Empowering local people and promoting Papua New Guinea's produce drives economic growth, creates jobs, and builds a stronger, self-reliant nation.

